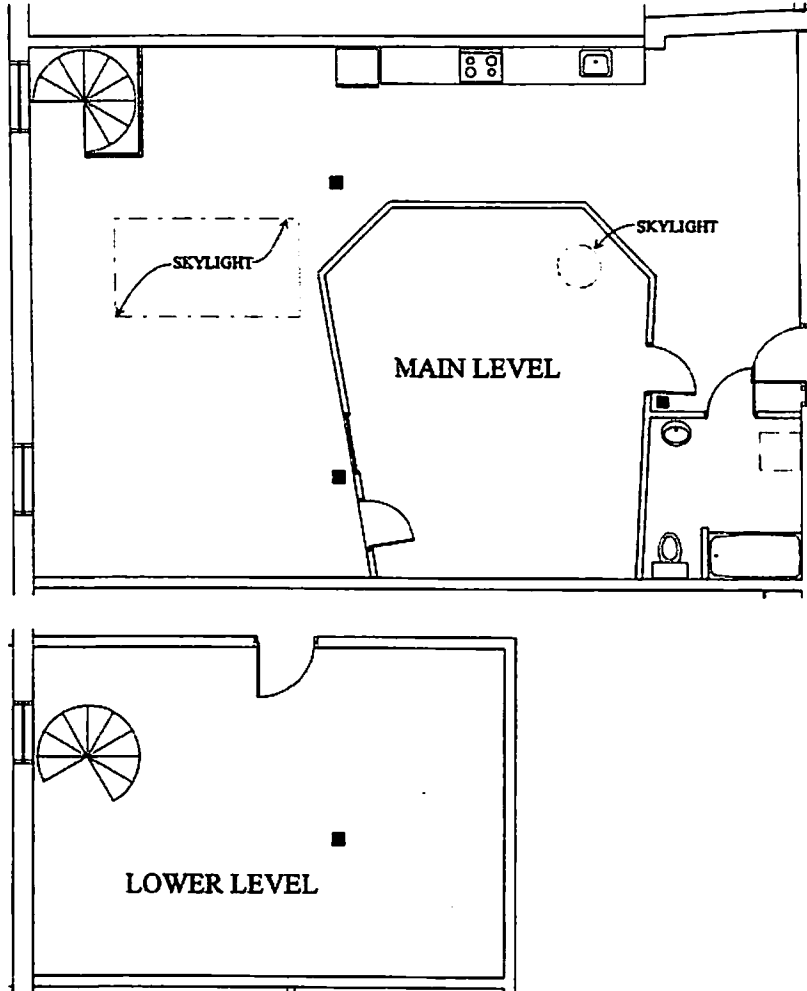


THIS FLOOR PLAN AND THE DIMENSIONS AND SQUARE FOOTAGE CALCULATIONS SHOWN HEREON ARE ONLY APPROXIMATIONS. ANY UNIT OWNER WHO IS CONCERNED ABOUT ANY REPRESENTATIONS REGARDING THIS FLOOR PLAN SHOULD DO HIS/HER OWN INVESTIGATION AS TO THE DIMENSIONS, MEASUREMENTS AND SQUARE FOOTAGE OF THE UNIT.

THE CONDOMINIUM DECLARATION FOR ALLIED FACTORY LOFTS, A CONDOMINIUM, IS RECORDED IN DEED BOOK , PAGE OF THE SUPERIOR COURT OF FULTON COUNTY, GEORGIA RECORDS.



ALLIED FACTORY LOFTS, A CONDOMINIUM STUDIO E

1,705 S.F.

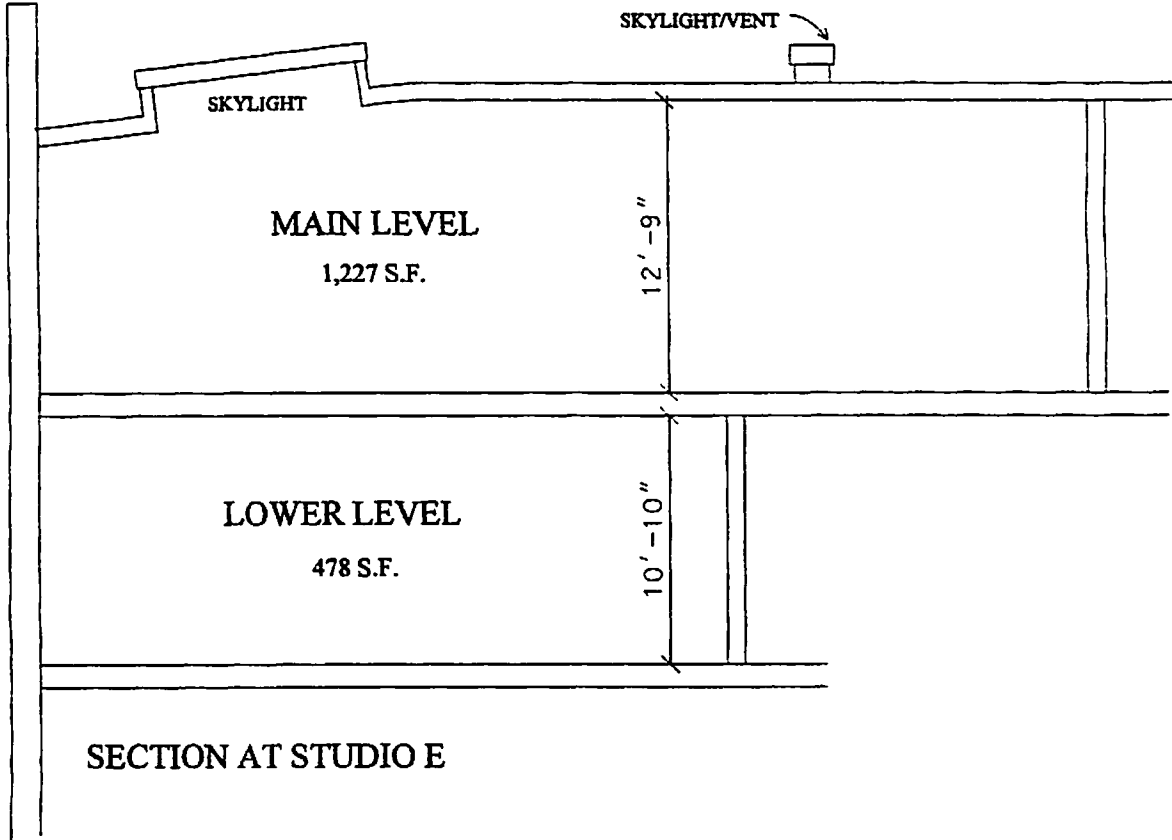
THE UNDERSIGNED, A REGISTERED ARCHITECT OR ENGINEER HAS VISITED THE SITE KNOWN AS ALLIED FACTORY LOFTS, A CONDOMINIUM, AND VIEWED THE PROPERTY AND TO THE BEST OF HIS KNOWLEDGE, INFORMATION, AND BELIEF; (i) THE EXTERIOR WALLS AND ROOF OF EACH SUCH STRUCTURE ARE IN PLACE AS SHOWN ON SAID PLANS AND (ii) SUCH WALLS, PARTITIONS, FLOORS AND CEILINGS, TO THE EXTENT SHOWN ON SAID PLANS AS CONSTITUTE THE HORIZONTAL BOUNDARIES, IF ANY, AND THE VERTICAL BOUNDARIES OF EACH UNIT (INCLUDING CONVERTIBLE SPACE) HAVE BEEN SUFFICIENTLY CONSTRUCTED SO AS TO CLEARLY ESTABLISH THE PHYSICAL BOUNDARIES OF SUCH UNIT.



NAME: _____

THIS FLOOR PLAN AND THE DIMENSIONS AND SQUARE FOOTAGE CALCULATIONS SHOWN HEREON ARE ONLY APPROXIMATIONS. ANY UNIT OWNER WHO IS CONCERNED ABOUT ANY REPRESENTATIONS REGARDING THIS FLOOR PLAN SHOULD DO HIS/HER OWN INVESTIGATION AS TO THE DIMENSIONS, MEASUREMENTS AND SQUARE FOOTAGE OF THE UNIT.

THE CONDOMINIUM DECLARATION FOR ALLIED FACTORY LOFTS, A CONDOMINIUM, IS RECORDED IN DEED BOOK , PAGE OF THE SUPERIOR COURT OF FULTON COUNTY, GEORGIA RECORDS.



ALLIED FACTORY LOFTS, A CONDOMINIUM STUDIO E

1,705 S.F.

THE UNDERSIGNED, A REGISTERED ARCHITECT OR ENGINEER HAS VISITED THE SITE KNOWN AS ALLIED FACTORY LOFTS, A CONDOMINIUM, AND VIEWED THE PROPERTY AND TO THE BEST OF HIS KNOWLEDGE, INFORMATION, AND BELIEF; (i) THE EXTERIOR WALLS AND ROOF OF EACH STRUCTURE ARE IN PLACE AS SHOWN ON SAID PLANS AND (ii) SUCH WALLS, PARTITIONS, FLOORS AND CEILINGS, TO THE EXTENT SHOWN ON SAID PLANS AS CONSTITUTE THE HORIZONTAL BOUNDARIES, IF ANY, AND THE VERTICAL BOUNDARIES OF EACH UNIT (INCLUDING CONVERTIBLE SPACE) HAVE BEEN SUFFICIENTLY CONSTRUCTED SO AS TO CLEARLY ESTABLISH THE PHYSICAL BOUNDARIES OF SUCH UNIT.



NAME: _____